



# ADVANCED PACKAGE DT456

*#beyondtheroad*

## Internal Battery

**Basic Vehicle Tracking  
Information such as  
Location, Idle Time, and  
Speed for Passenger  
and Commercial  
Vehicle**

## Bluetooth Accessory

**Business-Critical  
Information with  
Extensive Accessory  
Support**



## Advanced Package DT456

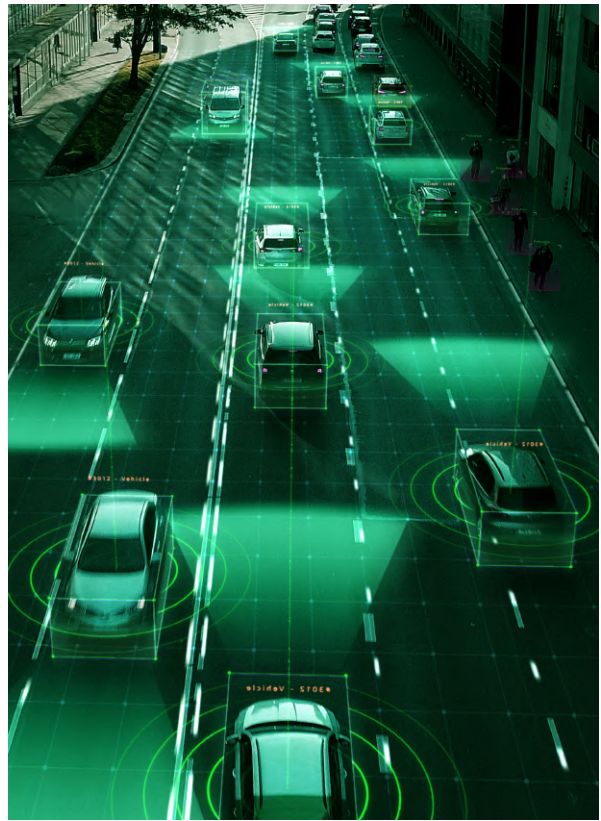
### Features that Make a Difference

In addition to providing essential vehicle tracking data such as location, speed, and idling status of passenger and commercial vehicles, it also offers business-critical information with extensive support and internal battery features.

It provides instant information with more satellites and precise location information.

Additionally, it enables the use of the door, temperature, immobilizer, driver identification, and CANBus systems through accessory and sensor connections.

Emergency button connection, door, cover and damper sensors as well as the built-in motion sensor provide the opportunity to learn about towing warnings instantly.



## Technical Features

Dimensions	: 79.5 × 44.3 × 11.9 mm
Weight	: 55 g.
Operating Voltage	: 8-32 VDC
Operating Temperature	: -30 °C ~ +80 °C
Certificates	: CE, E-Mark

